



1432 WALNUT STREET • ERIE, PA 16502 USA • TEL: (814) 453-5014 • FAX: (814) 452-6573
 Home Page: <http://www.fluideng.com> • E-Mail: fluideng@fluideng.com

SERIES 102 SIMPLEX STRAINERS SWING BOLT “O”-RING CLOSURE FLANGED CONNECTIONS

OPERATING LIMITS ON SEAL GASKETS

ELASTOMER	°F	°C
Buna-N	250	121
Ethylene Propylene	300	150
Viton	450	232
Silicon*	450	232

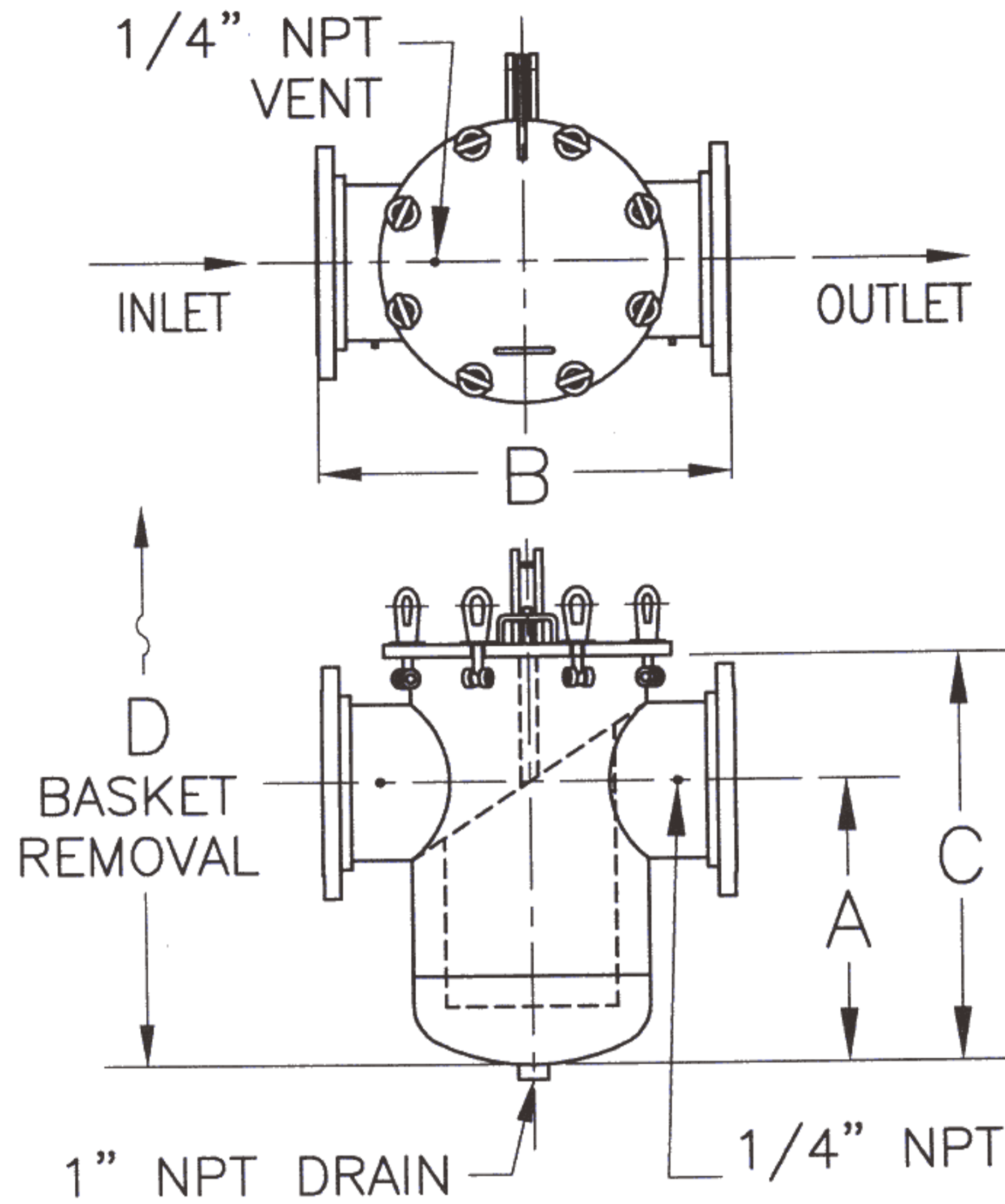
*Do not use for paint applications

STANDARD CONSTRUCTION

BODY	Carbon steel, 304 and 316 stainless steel
BASKET	304 and 316 stainless steel, angled design, large capacity
OPERATING PRESSURE & TEMPERATURE	150 psi @ 250°F

OPTIONS

- High pressure and temperature ratings
- Differential pressure switches and gauges
- ASME Code “U” Stamp
- Nuclear Grade ASME Code “N” Stamp
- Support Legs
- Vent and Drain Valves
- Cover Counterbalancing Device
- Other materials available for corrosive environments
- Other sizes available upon request



MODEL NUMBER	CONNECTION	A	B	C	D	WEIGHT
102-030	3"-150# RF 80 mm	9-3/4" 247.7 mm	16-5/8" 422.3 mm	14-3/4" 374.7 mm	27" 685.8 mm	112 lbs. 50.8 kg.
102-040	4"-150# RF 100 mm	9-3/4" 247.7 mm	16-5/8" 422.3 mm	14-3/4" 374.7 mm	27" 685.8 mm	124 lbs. 56.2 kg.
102-060	6"-150# RF 150 mm	11-7/8" 301.6 mm	21" 533.4 mm	18-1/8" 460.4 mm	34" 863.6 mm	214 lbs. 97.1 kg.
102-080	8"-150# RF 200 mm	15-1/8" 384.2 mm	24" 609.6 mm	22-5/8" 574.7 mm	42" 1066.8 mm	315 lbs. 142.9 kg.
102-100	10"-150# RF 250 mm	19-1/2" 495.3 mm	28" 711.2 mm	28-1/8" 714.4 mm	52-1/4" 1327.2 mm	465 lbs. 211.0 kg.
102-120	12"-150# RF 300 mm	22-1/2" 571.5 mm	30" 762.0 mm	33" 838.2 mm	60-1/2" 1536.7 mm	655 lbs. 297.1 kg.
102-140	14"-150# RF 350 mm	24-1/4" 616.0 mm	32" 812.8 mm	37-3/4" 958.9 mm	66-1/4" 1682.8 mm	840 lbs. 381.0 kg.
102-160	16"-150# RF 400 mm	25-9/16" 649.3 mm	34" 863.6 mm	37-13/16" 960.4 mm	70" 1778.0 mm	1040 lbs. 471.7 kg.

Dimensions subject to change without notice, apply for certified drawings.