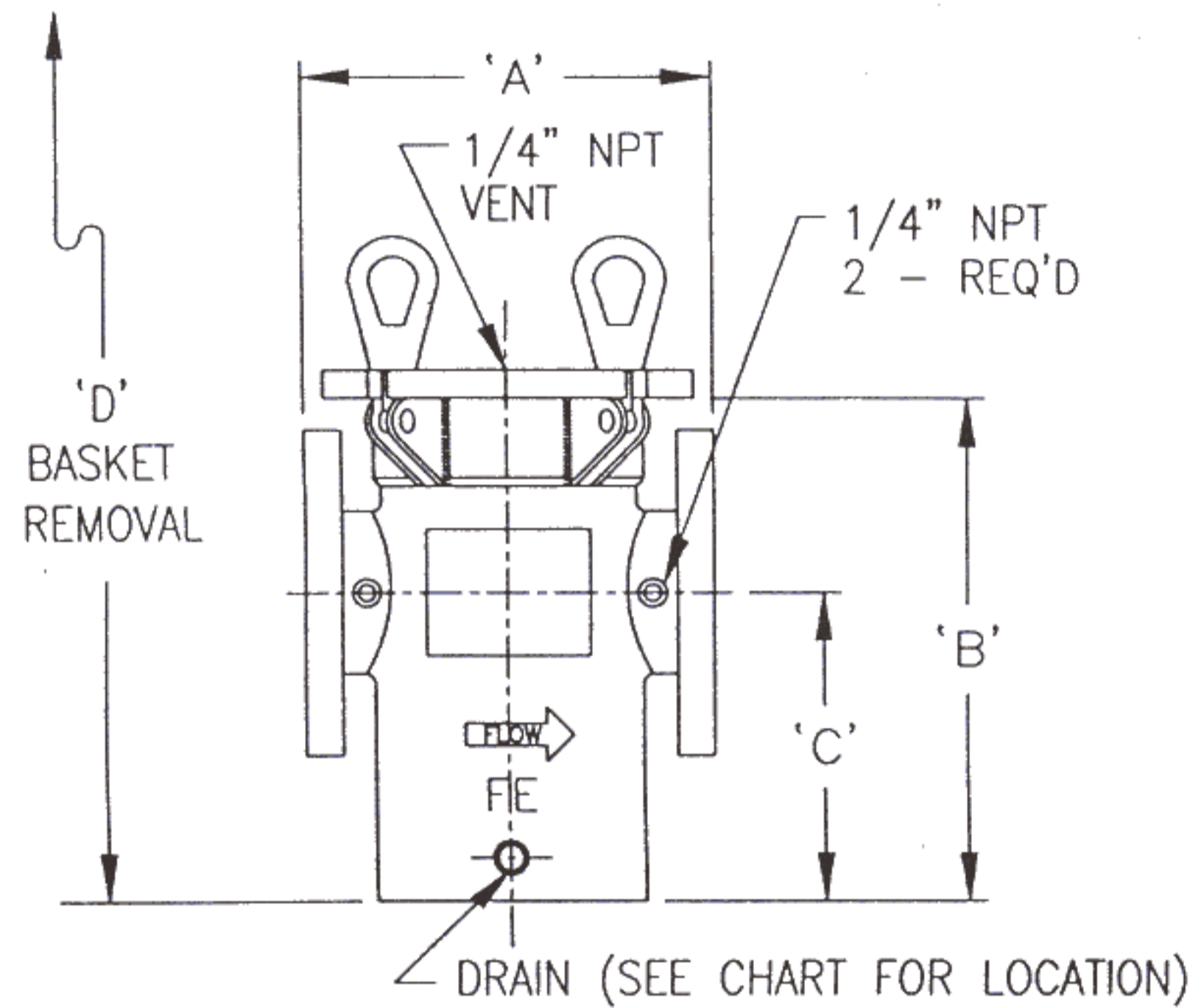


Series 105 Simplex Strainer Cast Iron Swing Bolt O-Ring Closure, Flanged Connection Class 125 ANSI Flat Face Flange Rating



Size Connection	A	B	C	D	Drain Size and Location	Weight	Cv
2"-125# FF 50 mm	11-3/4" 298.5 mm	9-3/4" 247.7 mm	8" 203.2 mm	18-3/4" 476.3 mm	1/4" NPT Bottom	27 lbs. 12.2 kg.	85 GPM 323 LPM
2-1/2"-125# FF 65 mm	13" 330.2 mm	13-7/8" 352.4 mm	8-1/2" 215.9 mm	27" 685.8 mm	1/2" NPT Bottom	85 lbs. 38.5 kg.	125 GPM 475 LPM
3"-125# FF 80 mm	13" 330.2 mm	13-7/8" 352.4 mm	8-1/2" 215.9 mm	27" 685.8 mm	1/2" NPT Bottom	95 lbs. 43.1 kg.	200 GPM 760 LPM
4"-125# FF 100 mm	13-1/2" 342.9 mm	13-7/8" 352.4 mm	8-1/2" 215.9 mm	27" 685.8 mm	1/2" NPT Bottom	114 lbs. 51.7 kg.	350 GPM 1330 LPM
5"-125# FF 125 mm	15" 381.0 mm	15-1/4" 387.4 mm	9-3/8" 238.1 mm	30" 762.0 mm	1/2" NPT Body	148 lbs. 67.1 kg.	560 GPM 2128 LPM
6"-125# FF 150 mm	17-1/4" 438.2 mm	16-5/8" 422.3 mm	10-1/4" 260.4 mm	32" 812.8 mm	1/2" NPT Body	185 lbs. 83.9 kg.	810 GPM 3078 LPM
8"-125# FF 200 mm	22" 558.8 mm	20-7/8" 530.2 mm	13-1/4" 336.6 mm	41" 1041.4 mm	3/4" NPT Body	316 lbs. 143.3 kg.	1360 GPM 5168 LPM
10"-125# FF 250 mm	26" 660.4 mm	25-3/4" 654.1 mm	17" 431.8 mm	50" 1270.0 mm	3/4" NPT Body	510 lbs. 231.3 kg.	2085 GPM 7923 LPM
12"-125# FF 300 mm	30" 762.0 mm	29-7/8" 758.8 mm	19-3/4" 501.7 mm	58" 1473.2 mm	3/4" NPT Body	795 lbs. 360.5 kg.	3025 GPM 11495 LPM

Dimensions subject to change without notice, apply for certified drawings.

Operating Limits on Seal Gaskets

ELASTOMER	°F	°C
Buna-N	257	125
EPDM	302	150
Viton ¹	437	225
Silicone ²	482	250

1 Supplied as standard.

2 Do not use for paint applications.

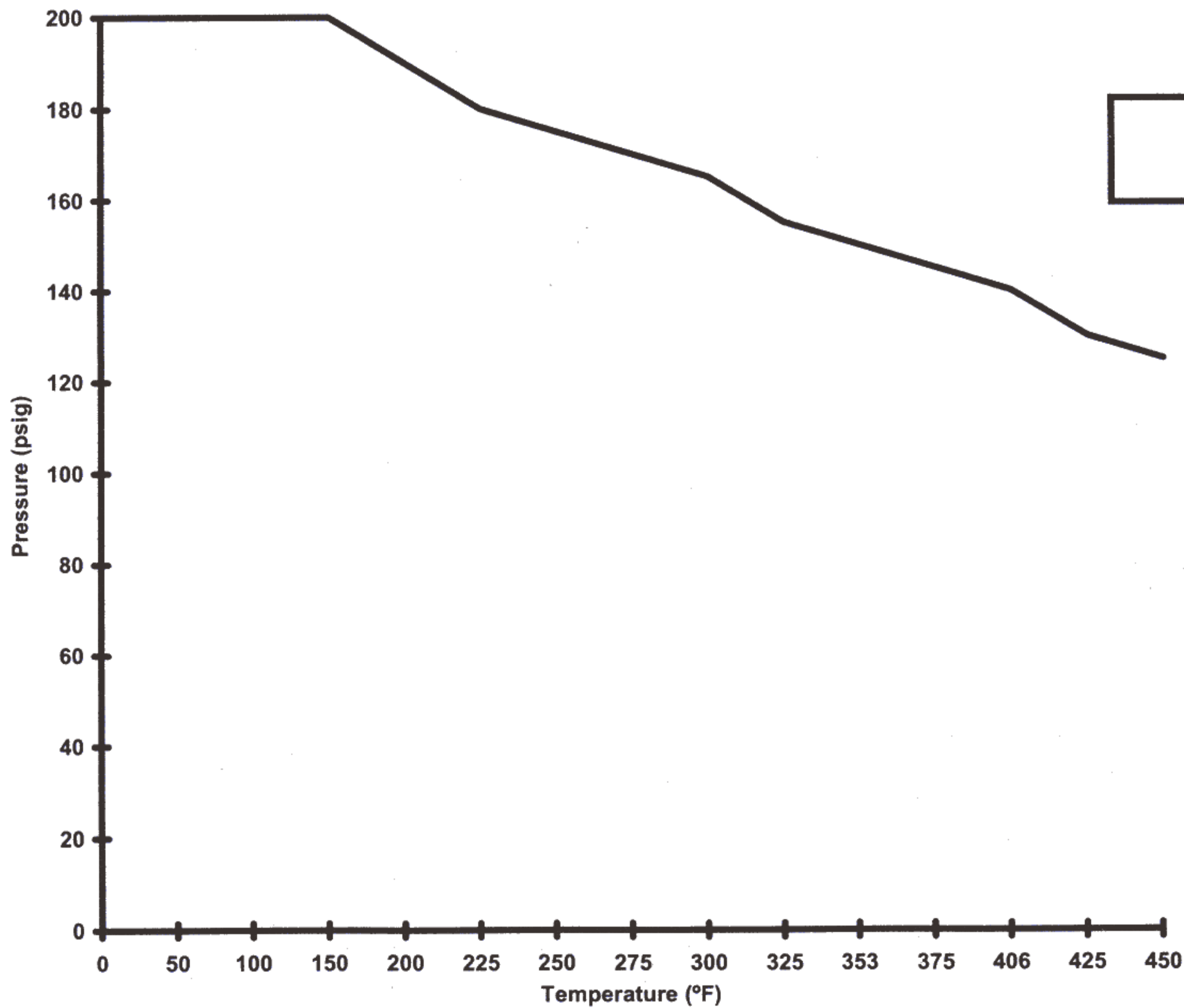
Standard Construction

	Cast Iron
Body	Class 30 ASTM A126-B
Cover	Class 30 ASTM A126-B
O-Ring	Viton
Basket	Available in 1/32", 1/16", or 1/8" perforations and 40 mesh and 80 mesh - 316 Stainless Steel

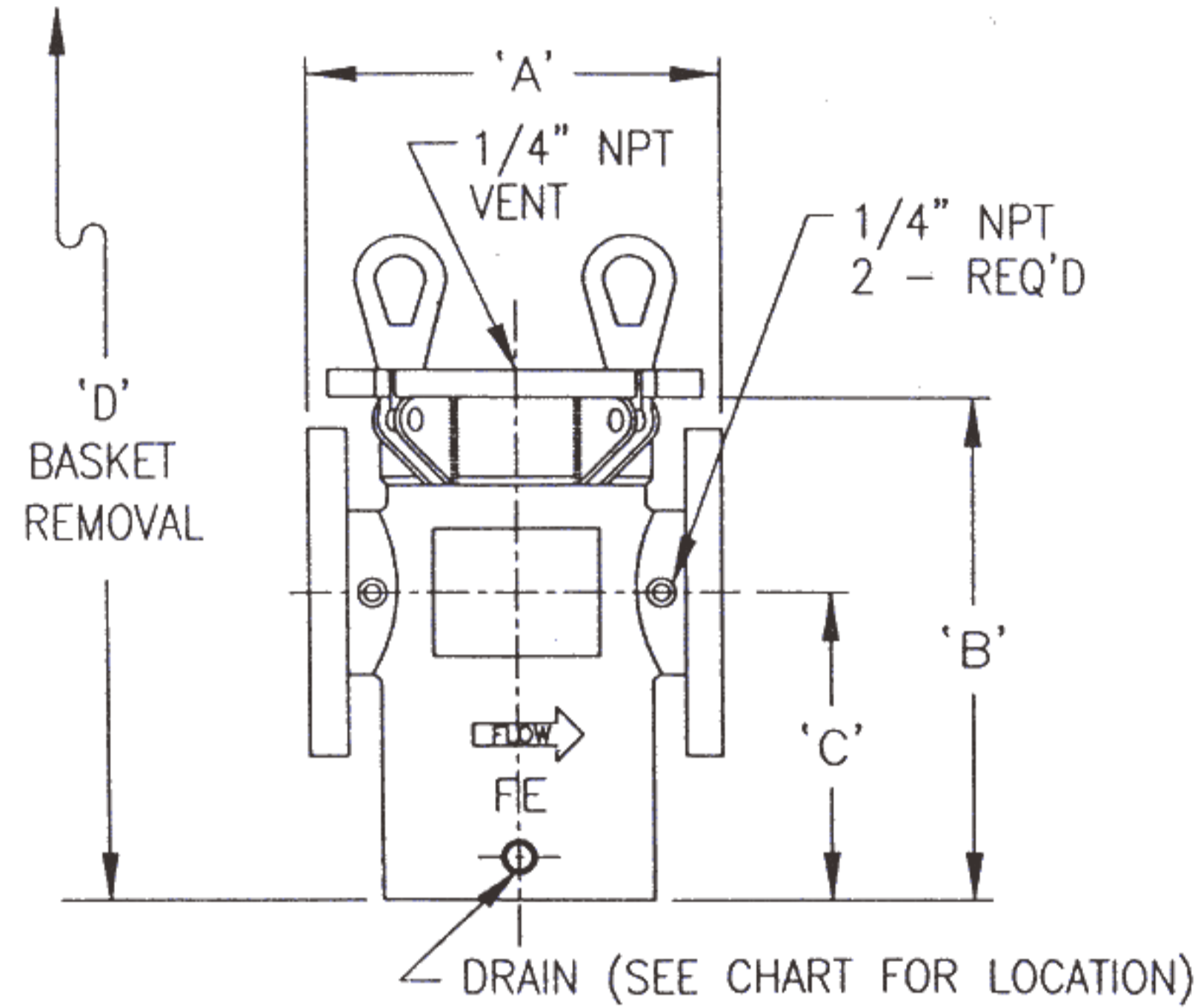
Options:

- Baskets are available in other materials, perforations, and meshes, please consult the factory or your local sales representative.
- Drilling is available, upon request, to meet BS4504 PN10 and PN16 and JIS Flange Sizes.

**Pressure vs. Temperature (ANSI)
Maximum Operating Pressure and Temperature
W.O.G. Service**



Series 105 Simplex Strainer Cast Steel and Cast 316 Stainless Steel Swing Bolt O-Ring Closure, Flanged Connection Class 150 ANSI Raised Face Flange Rating



Size Connection	A	B	C	D	Drain Size and Location	Weight	Cv
2"-150# RF 50 mm	11-3/4" 298.5 mm	9-3/4" 247.7 mm	8" 203.2 mm	18-3/4" 476.3 mm	1/4" NPT Bottom	27 lbs. 12.2 kg.	85 GPM 323 LPM
2-1/2"-150# RF 65 mm	13" 330.2 mm	13-7/8" 352.4 mm	8-1/2" 215.9 mm	27" 685.8 mm	1/2" NPT Bottom	85 lbs. 38.5 kg.	125 GPM 475 LPM
3"-150# RF 80 mm	13" 330.2 mm	13-7/8" 352.4 mm	8-1/2" 215.9 mm	27" 685.8 mm	1/2" NPT Bottom	95 lbs. 43.1 kg.	200 GPM 760 LPM
4"-150# RF 100 mm	13-1/2" 342.9 mm	13-7/8" 352.4 mm	8-1/2" 215.9 mm	27" 685.8 mm	1/2" NPT Bottom	114 lbs. 51.7 kg.	350 GPM 1330 LPM
5"-150# RF 125 mm	15" 381.0 mm	15-1/4" 387.4 mm	9-3/8" 238.1 mm	30" 762.0 mm	1/2" NPT Body	148 lbs. 67.1 kg.	560 GPM 2128 LPM
6"-150# RF 150 mm	17-1/4" 438.2 mm	16-5/8" 422.3 mm	10-1/4" 260.4 mm	32" 812.8 mm	1/2" NPT Body	185 lbs. 83.9 kg.	810 GPM 3078 LPM
8"-150# RF 200 mm	22" 558.8 mm	20-7/8" 530.2 mm	13-1/4" 336.6 mm	41" 1041.4 mm	3/4" NPT Body	316 lbs. 143.3 kg.	1360 GPM 5168 LPM
10"-150# RF 250 mm	26" 660.4 mm	25-3/4" 654.1 mm	17" 431.8 mm	50" 1270.0 mm	3/4" NPT Body	510 lbs. 231.3 kg.	2085 GPM 7923 LPM
12"-150# RF 300 mm	30" 762.0 mm	29-7/8" 758.8 mm	19-3/4" 501.7 mm	58" 1473.2 mm	3/4" NPT Body	795 lbs. 360.5 kg.	3025 GPM 11495 LPM

Dimensions subject to change without notice, apply for certified drawings.

Operating Limits on Seal Gaskets

ELASTOMER	°F	°C
Buna-N	257	125
EPDM	302	150
Viton ¹	437	225
Silicone ²	482	250

1 Supplied as standard.

2 Do not use for paint applications.

Standard Construction

	Cast Steel	Cast 316 Stainless Steel
Body	A216 Grade WCB	A351 Grade CF8M
Cover	A216 Grade WCB	Cast Steel with 316 Overlay
O-Ring	Viton	Viton
Basket	Available in 1/32", 1/16", or 1/8" perforations and 40 mesh and 80 mesh - 316 Stainless Steel	

Options:

- Baskets are available in other materials, perforations, and meshes, please consult the factory or your local sales representative.
- Drilling is available, upon request, to meet BS4504 PN10 and PN16 and JIS Flange Sizes.

Pressure vs. Temperature (ANSI)
Maximum Operating Pressure and Temperature
W.O.G. Service

