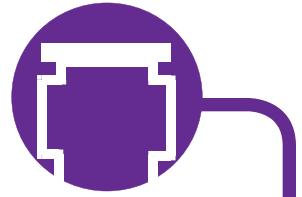




1432 Walnut Street \* Erie, PA 16502 USA \* TEL: 814.453.5014 \* FAX: 814.452.6573  
Website: <http://www.fluideng.com> \* E-mail: [sales@fluideng.com](mailto:sales@fluideng.com)

## Series 107 & 108 Simplex Strainers



Cast simplex strainers are used in applications where the flow can be interrupted for basket cleaning. These strainers are an excellent choice for protection of pumps, meters, valves, traps, spray nozzles, and many more applications.

### High Quality Construction

- Flanges designed and built to ANSI, British, or JIS specifications
- Material specifications in accordance to ASME and ASTM
- Each strainer is proof pressure tested per ASME standards before shipment

### Material of Construction for a Variety of Applications

- Available in cast steel, and cast stainless steel to meet the demands of a wider range of applications
- ASME Section VIII Division I "U" stamp available for cast steel and cast stainless steel



**108 Simplex Strainer with Davit Arm**

### 107 Simplex Strainer with Hinged Cover



### Low Maintenance Costs

- Quick opening swing bolt reduces the maintenance time
- Few replacement parts are required

### Low Installation Costs

- In-line connections

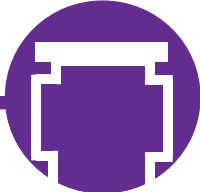
### Low Capital Investments

- Competitively priced
- Heavy-duty, large capacity baskets are designed for long life

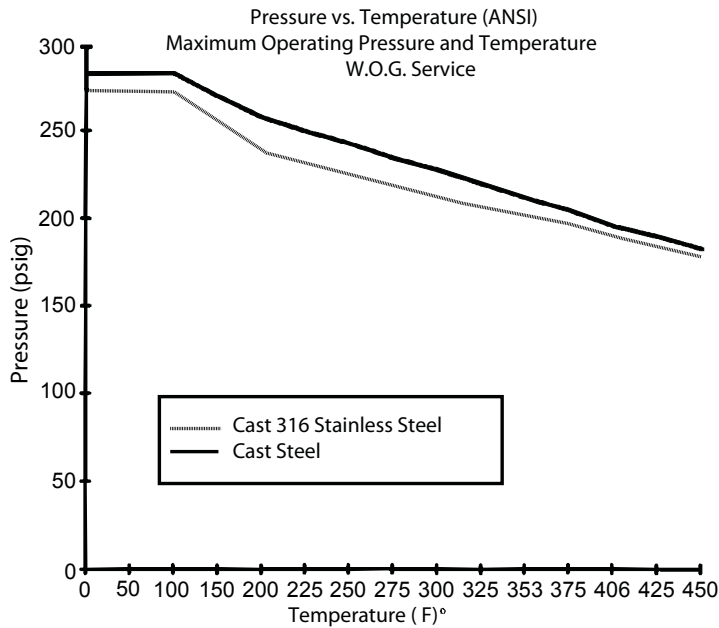
### Large Capacity Baskets

- Provides for a low pressure drop and a larger basket open area

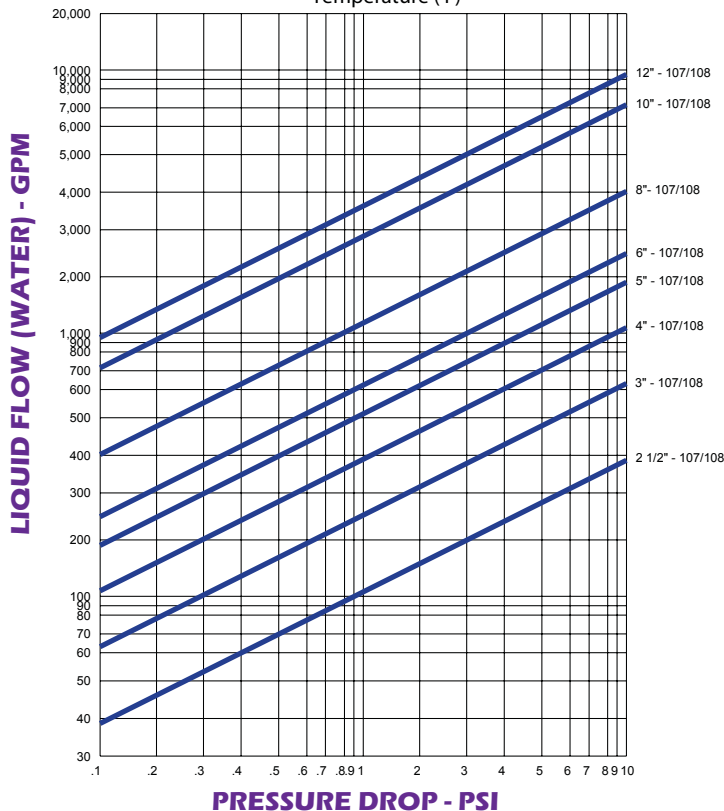
**"Engineered Products for Demanding Applications, Performance, and Service"**



## Series 107 & 108 Simplex Strainers



Standard Construction		
	Cast Steel	Cast 316 Stainless Steel
<b>Body</b>	A216 Grade WCB	A351 Grade CF8M
<b>Cover</b>	A216 Grade WCB	Cast Steel with 316 Overlay
<b>O-ring</b>	Viton	Viton
<b>Basket</b>	Available in 1/32", 1/16", or 1/8" perforations and 40 mesh and 80 mesh - 316 Stainless Steel	



Operating Limits on Seal Gaskets		
Elastomer	°F	°C
Buna-N	257	125
EPDM	302	150
Viton <sup>1</sup>	437	225
Silicone <sup>2</sup>	482	250

<sup>1</sup>Supplied as standard

<sup>2</sup>Do not use for paint applications

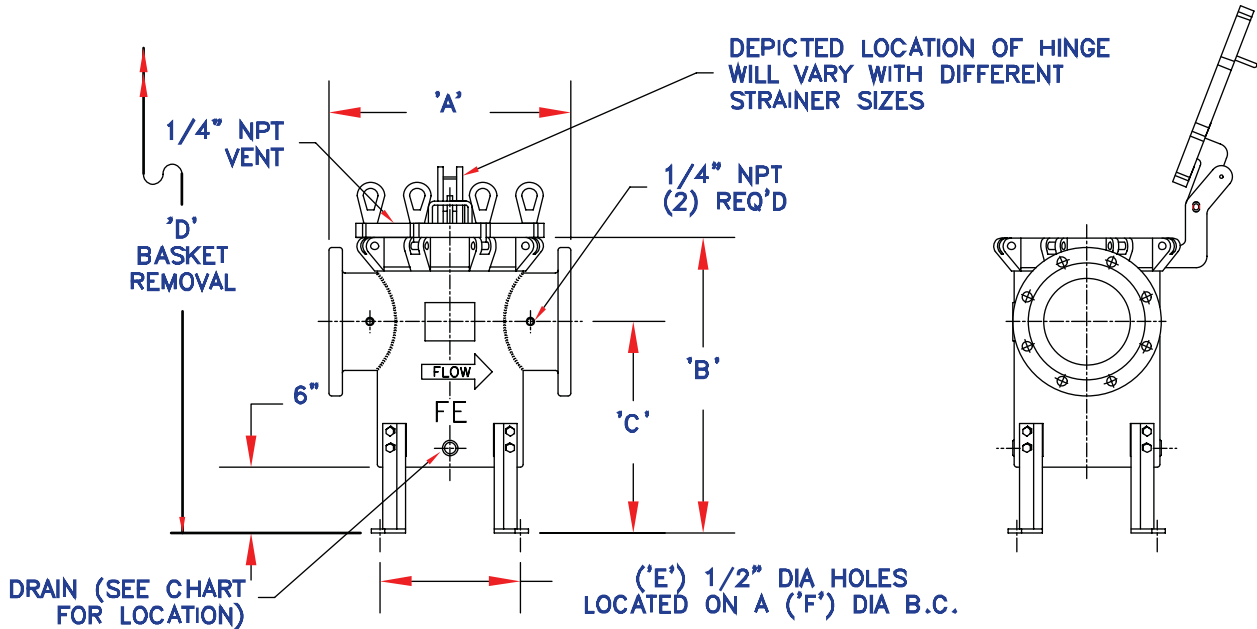
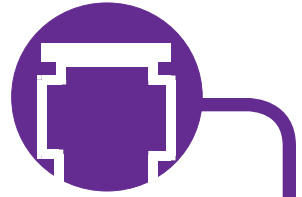
### Options

- Baskets are available in other materials, perforations, and meshes. Please consult the factory
- Drill is available, upon request, to meet BS4504 PN10 and PN16 and JIS flange sizes



1432 Walnut Street \* Erie, PA 16502 USA \* TEL: 814.453.5014 \* FAX: 814.452.6573  
 Website: <http://www.fluideng.com> \* E-mail: [sales@fluideng.com](mailto:sales@fluideng.com)

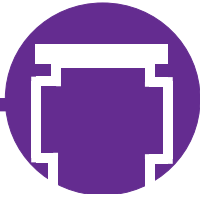
**Series 107 Simplex Strainers**  
**Cast Steel and Cast 316 Stainless Steel**  
**Swing Bolt O-Ring Closure, Flanged Connection**  
**Class 150 ANSI Raised Face Flange Rating**  
**Hinged Cover Lift**



Size Connection	A	B	C	D	Number of Holes E	F	Drain Size and Location	Weight	Cv
2 1/2"-150# RF 65 mm	13" 330.2 mm	19 7/8" 504.8 mm	14 1/2" 368.3 mm	33" 838.2 mm	3	10 7/8" 276.2 mm	1/2" NPT Bottom	90 lbs. 40.8 kg.	125 GPM 475 LPM
3"-150# RF 80 mm	13" 330.2 mm	19 7/8" 504.8 mm	14 1/2" 368.3 mm	33" 838.2 mm	3	10 7/8" 276.2 mm	1/2" NPT Bottom	100 lbs. 45.3 kg.	200 GPM 760 LPM
4"-150# RF 100 mm	13 1/2" 342.9 mm	19 7/8" 504.8 mm	14 1/2" 368.3 mm	33" 838.2 mm	3	10 7/8" 276.2 mm	1/2" NPT Bottom	120 lbs. 54.3 kg.	350 GPM 1330 LPM
5"-150# RF 125 mm	15" 381.0 mm	21 1/4" 539.6 mm	15 3/8" 390.5 mm	36" 914.4 mm	4	11 7/8" 301.6 mm	1/2" NPT Body	158 lbs. 71.6 kg.	560 GPM 2128 LPM
6"-150# RF 150 mm	17 1/4" 438.2 mm	22 5/8" 574.7 mm	16 1/4" 412.8 mm	38" 965.2 mm	4	13 5/8" 346.1 mm	1/2" NPT Body	205 lbs. 93 kg.	810 GPM 3078 LPM
8"-150# RF 200 mm	22" 558.8 mm	26 7/8" 682.6 mm	19 1/4" 489.0 mm	47" 1193.8 mm	4	16 1/2" 419.1 mm	3/4" NPT Body	385 lbs. 174.6 kg.	1360 GPM 5168 LPM
10"-150# RF 250 mm	26" 660.4 mm	31 3/4" 806.5 mm	23" 584.2 mm	56" 1422.4 mm	4	19 3/8" 492.1 mm	3/4" NPT Body	618 lbs. 280.3 kg.	2085 GPM 7923 LPM
12"-150# RF 300 mm	30" 762.0 mm	35 7/8" 911.2 mm	25 3/4" 654.1 mm	64" 1625.6 mm	4	22 1/2" 571.5 mm	3/4" NPT Body	936 lbs. 424.5 kg.	3025 GPM 11495 LPM

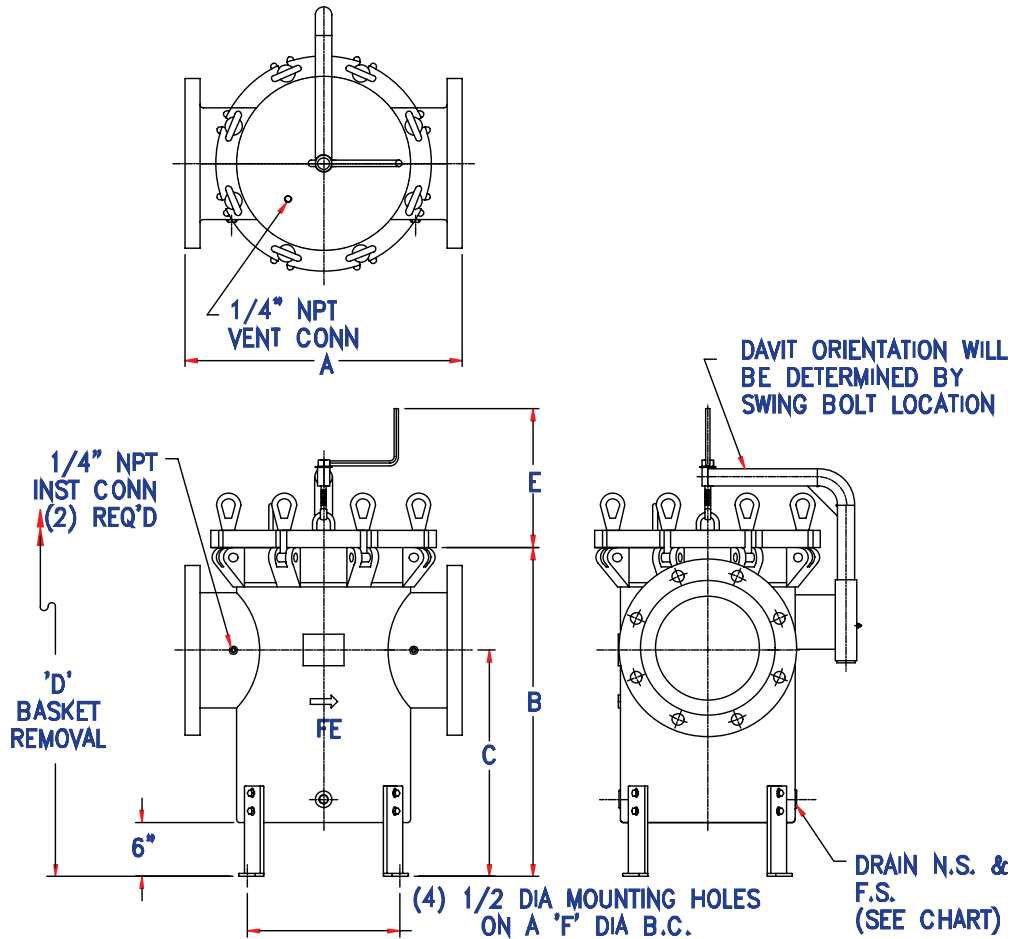
**Notes:** Dimensions subject to change without notice. Apply for certified drawings  
 Other size drains and vents on application

**"Engineered Products for Demanding Applications, Performance, and Service"**



## Series 108 Simplex Strainers

Cast Steel and Cast 316 Stainless Steel  
 Swing Bolt O-Ring Closure, Flanged Connection  
 Class 150 ANSI Raised Face Flange Rating  
 Davit Cover Lift



Size	A	B	C	D	E	F	DRAIN	WT APPROX	Cv
6"-150 RF 150 mm	17 1/4" 438.2 mm	22 5/8" 574.7 mm	16 3/4" 412.8 mm	38" 965.2 mm	11 1/8" 282.6 mm	13 5/8" 346.1 mm	1/2" NPT	195 lbs 88.5 kg	810 GPM 3078 LPM
8"-150 RF 200 mm	22" 558.8 mm	26 7/8" 682.6 mm	19 1/4" 489.0 mm	47" 1193.8 mm	11 3/8" 288.9 mm	16 1/2" 419.1 mm	3/4" NPT	330 lbs 149.7 kg	1360 GPM 5168 LPM
10"-150 RF 250 mm	26" 660.4 mm	31 3/4" 806.5 mm	23" 584.2 mm	56" 1422.4 mm	14 5/8" 371.5 mm	19 3/8" 492.1 mm	3/4" NPT	545 lbs 247.2 kg	2085 GPM 7923 LPM
12"-150 RF 300 mm	30" 762.0 mm	35 7/8" 911.2 mm	25 3/4" 654.1 mm	64" 1125.6 mm	14 7/8" 377.9 mm	22 1/2" 571.5 mm	3/4" NPT	830 lbs 376.5 kg	3025 GPM 11495 LPM

**Notes:** Dimensions subject to change without notice. Apply for certified drawings  
 Other size drains and vents on application