

FABRICATED SIMPLEX BASKET STRAINER SERIES 124 (1" THRU 24")

Strainers are used in nearly every industry to protect equipment (valves, pumps, meters, and spray nozzles) and to ensure product purity (gas, petroleum, paper, and food processing). This type of strainer is an inexpensive design that is used in applications where the flow can be interrupted for basket cleaning. This type of strainer is installed in a pipeline to remove unwanted solids from fluids or gases. Straining is accomplished by directing the fluid through a basket where debris is trapped on the inside of a screen element and clean fluid flows through the outlet.

Fluid Engineering simplex basket strainers are available in standard or custom designs. Fabricated designs are not limited to existing patterns or foundry capabilities and are especially superior for corrosive, hazardous, or low specific gravity fluid applications. The Series 124 can be custom designed in many configurations and materials for unusual conditions or critical applications.

Standard Design:

- Fabricated carbon steel body with bolted style cover
- Available in 1/16" or 1/8" perforations and 40 or 80 mesh - 316 stainless steel
- All vessels are manufactured and tested generally in accordance with ASME Code, Section VIII, Division 1, using welders certified to Section IX.
- All strainers are hydrostatically tested to 1 ½ times design pressure.

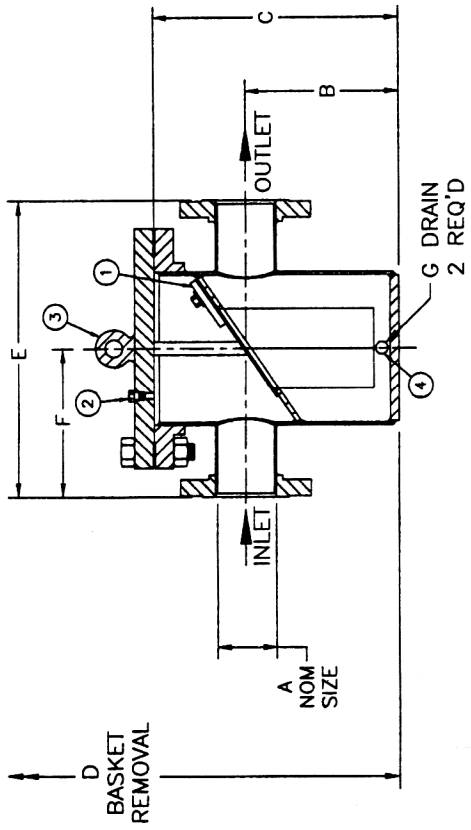
Standard Design Features:

- In line connections
- Compact, light weight fabricated vessels
- Angle basket design with a low pressure drop
- Large capacity basket
- Heavy duty basket design for a long life

Options Available:

- Basket materials of brass, monel, and other
- Mesh lined baskets - 20 x 20 to 400 x 400 mesh
- Numerous materials of construction such as stainless steel, copper nickel, monel, aluminum bronze, and others for corrosive environment
- ASME Section VIII, Code Stamp supplied with complete pressure vessel material traceability
- Vessel design for high pressure and temperature
- Inlet / outlet connections at right angles or offset configuration reduces piping cost.
- Pressure gauge taps - convenient indication of dirty baskets
- Cover lift assembly (davit) facilitates basket removal.
- Special internal and external coatings

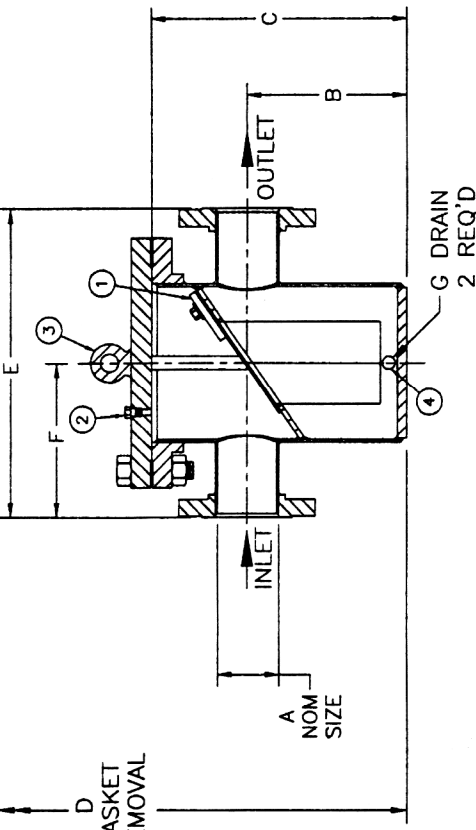
1. Basket hold down is available on 10" and larger sizes only.
2. Vent is available on 6" and larger sizes only.
3. Closure, lifting eye is available on 6" and larger sizes only.
4. Drain plug is located on the side for 6" and larger, otherwise it is on the bottom.



MODEL NO.	DESIGN PRESSURE	SIZE A	B	C	D	E	F	DRAIN G	APPROXIMATE WEIGHTS, LBS.			
									DRY	WET COVER		
0-114	150 Psig @ 150°F	1" NPT	6-5/8"	10-1/4"	17"	7-1/8"	3-9/16"	1/2" NPT	54	59	17	1
5-114	150 Psig @ 150°F	1-1/2" NPT	6-5/8"	10-1/4"	17"	7-1/4"	3-5/8"	1/2" NPT	55	60	17	1
0-114	150 Psig @ 150°F	2" NPT	6-5/8"	10-1/4"	17"	7-1/2"	3-3/4"	1/2" NPT	57	63	17	1
5-114	150 Psig @ 150°F	2-1/2" NPT	8-3/4"	14"	27"	12-1/4"	6-1/8"	1/2" NPT	113	136	45	2
0-114	150 Psig @ 150°F	3" NPT	8-3/4"	14"	27"	12-5/8"	6-5/16"	1/2" NPT	115	140	45	2
0-114	150 Psig @ 150°F	4" NPT	8-3/4"	14"	27"	12-7/8"	6-7/16"	1/2" NPT	117	143	45	2
0-124	150 Psig @ 150°F	1-150# RF	6-5/8"	10-1/4"	17"	14-5/8"	7-5/16"	1/2" NPT	85	91	17	1
5-124	150 Psig @ 150°F	1-1/2"-150# RF	6-5/8"	10-1/4"	17"	14-5/8"	7-5/16"	1/2" NPT	87	93	17	1
0-124	150 Psig @ 150°F	2"-150# RF	6-5/8"	10-1/4"	17"	14-5/8"	7-5/16"	1/2" NPT	91	98	17	1
5-124	150 Psig @ 150°F	2-1/2"-150# RF	8-3/4"	14"	27"	15-5/8"	7-13/16"	1/2" NPT	166	195	45	2
0-124	150 Psig @ 150°F	3"-150# RF	8-3/4"	14"	27"	16-5/8"	8-5/16"	1/2" NPT	169	198	45	2
5-124	150 Psig @ 150°F	4"-150# RF	8-3/4"	14"	27"	16-5/8"	8-5/16"	1/2" NPT	176	206	45	2
0-124	150 Psig @ 150°F	6"-150# RF	10-1/2"	16-3/4"	31"	21"	10-1/2"	1" NPT	255	315	70	3
0-124	150 Psig @ 150°F	8"-150# RF	13-1/4"	20-3/4"	39"	24"	12"	1" NPT	380	490	105	5
0-124	150 Psig @ 150°F	10"-150# RF	17-1/4"	26"	47-1/2"	28"	14"	1" NPT	605	825	175	7
0-124	150 Psig @ 150°F	12"-150# RF	19-3/4"	30"	55-1/2"	30"	15"	1-1/2" NPT	795	1110	215	9
0-124	150 Psig @ 150°F	14"-150# RF	21"	33"	59"	32"	16"	1-1/2" NPT	1030	1455	275	11
0-124	150 Psig @ 150°F	16"-150# RF	23"	35-1/4"	65"	34"	17"	1-1/2" NPT	1280	1840	375	13
0-124	150 Psig @ 150°F	18"-150# RF	26"	39-5/8"	73"	36"	18"	2" NPT	1565	2315	425	16
0-124	150 Psig @ 150°F	20"-150# RF	30"	44-7/8"	84"	42"	21"	2" NPT	2345	3610	600	20
0-124	150 Psig @ 150°F	24"-150# RF	34-1/2"	49-5/8"	97"	50"	25"	2" NPT	3150	5175	980	28

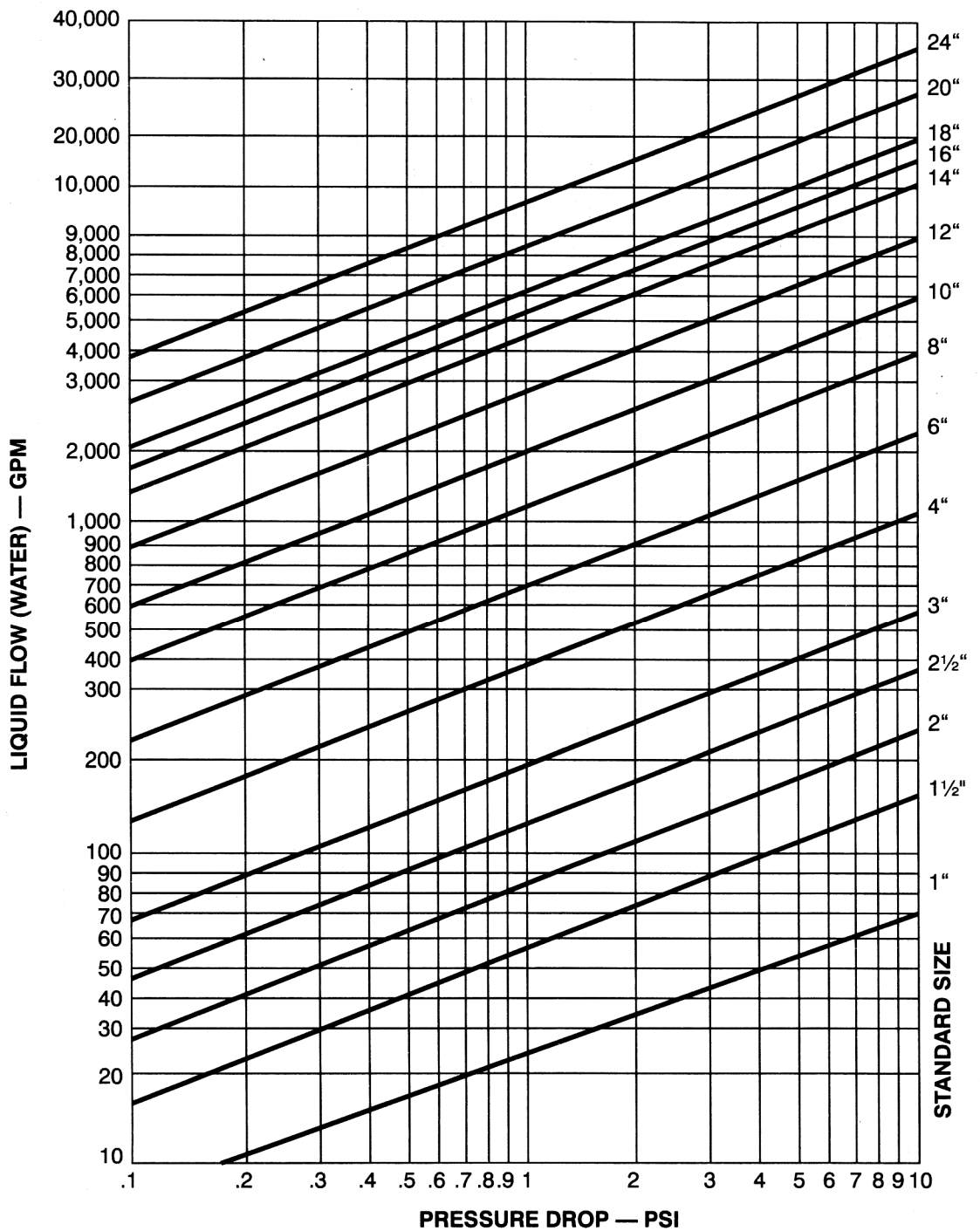
Larger sizes are available upon request.
 Dimensions are subject to change without notice, apply for certified drawings.

1. Basket hold down is available on 10" and larger sizes only.
2. Vent is available on 6" and larger sizes only.
3. Closure, lifting eye is available on 6" and larger sizes only.
4. Drain plug is located on the side for 6" and larger, otherwise it is on the bottom.



ODEL NO.	DESIGN PRESSURE	SIZE A	B	C	D	E	F	DRAIN G	DRY WEIGHT	APPROXIMATE WET COVER WEIGHT	BASKETS
0-0-114	300 Psig @ 150°F	1" NPT	6-5/8"	11"	18"	7-1/8"	3-9/16"	1/2" NPT	69	75	27
0-5-114	300 Psig @ 150°F	1-1/2" NPT	6-5/8"	11"	18"	7-1/4"	3-5/8"	1/2" NPT	71	77	27
0-0-114	300 Psig @ 150°F	2" NPT	6-5/8"	11"	18"	7-1/2"	3-3/4"	1/2" NPT	73	79	27
0-5-114	300 Psig @ 150°F	2-1/2" NPT	8-3/4"	15"	28"	12-1/4"	6-1/8"	1/2" NPT	208	231	81
0-0-114	300 Psig @ 150°F	3" NPT	8-3/4"	15"	28"	12-5/8"	6-5/16"	1/2" NPT	214	239	81
0-0-114	300 Psig @ 150°F	4" NPT	8-3/4"	15"	28"	12-7/8"	6-7/16"	1/2" NPT	220	246	81
0-0-124	300 Psig @ 150°F	1"-300# RF	6-5/8"	11"	18"	14-5/8"	7-5/16"	1/2" NPT	87	93	27
0-5-124	300 Psig @ 150°F	1-1/2"-300# RF	6-5/8"	11"	18"	14-5/8"	7-5/16"	1/2" NPT	93	99	27
0-0-124	300 Psig @ 150°F	2"-300# RF	6-5/8"	11"	18"	14-5/8"	7-5/16"	1/2" NPT	95	102	27
0-5-124	300 Psig @ 150°F	2-1/2"-300# RF	8-3/4"	15"	28"	19"	9-1/2"	1/2" NPT	225	254	81
0-0-124	300 Psig @ 150°F	3"-300# RF	8-3/4"	15"	28"	19"	10"	1/2" NPT	233	262	81
0-0-124	300 Psig @ 150°F	4"-300# RF	8-3/4"	15"	28"	20"	10"	1/2" NPT	252	282	81
0-0-124	300 Psig @ 150°F	6"-300# RF	10-1/2"	17"	32"	24"	12"	1" NPT	408	468	127
0-0-124	300 Psig @ 150°F	8"-300# RF	13-1/4"	22"	41"	28"	14"	1" NPT	610	720	184
0-0-124	300 Psig @ 150°F	10"-300# RF	16-3/4"	27"	49"	32"	16"	1" NPT	884	1104	224
0-0-124	300 Psig @ 150°F	12"-300# RF	19-1/4"	31"	57"	34"	17"	1-1/2" NPT	1085	1400	263
0-0-124	300 Psig @ 150°F	14"-300# RF	20-3/4"	33"	61"	38"	19"	1-1/2" NPT	1307	1732	305
0-0-124	300 Psig @ 150°F	16"-300# RF	23"	38"	67"	42"	21"	1-1/2" NPT	1715	2275	400
0-0-124	300 Psig @ 150°F	18"-300# RF	26"	41"	75"	46"	23"	2" NPT	2060	2810	456
0-0-124	300 Psig @ 150°F	20"-300# RF	30"	46"	86"	48"	24"	2" NPT	2550	2815	614
0-0-124	300 Psig @ 150°F	24"-300# RF	33-3/4"	50-3/8"	100"	54"	27"	2" NPT	3960	5985	1068

Larger sizes are available upon request.
 Dimensions subject to change without notice, apply for certified drawings.



EXAMPLE OF A TYPICAL ORDER SPECIFICATION:

Simplex Strainer shall be size _____ Series 124 with flanged connections as manufactured by _____ Fluid Engineering; Erie, PA.

Strainer body shall be (Fabricated Carbon Steel) with bolted style cover closure. Strainer will be suitable for design pressures of (150) psig at (150°F). Baskets shall be (304 Stainless Steel) with 1/16" or 1/32" perforated openings.

Operating Capacity shall be _____ GPM at _____ psig pressure loss with clean baskets.