

SIMPLEX STRAINER WITH BACKWASH CONNECTIONS FABRICATED 224 SERIES

Standard Design:

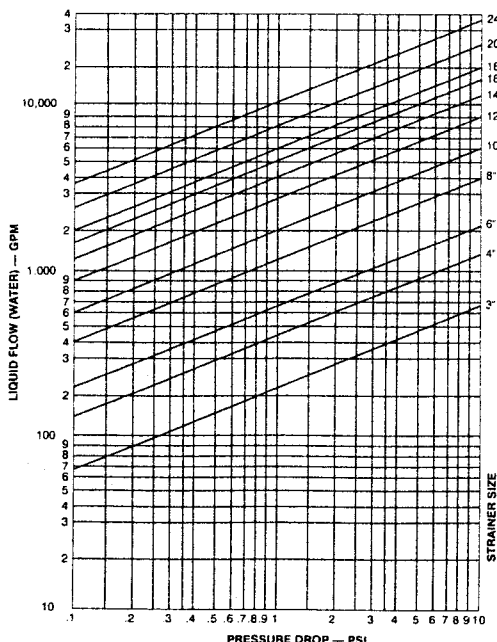
- Fabricated carbon steel body with bolted style cover
- Available in 1/16" or 1/8" perforations and 40 or 80 mesh – 316 stainless steel
- All vessels are manufactured and tested generally in accordance with ASME Code, Section VIII, Division 1, using welders certified to Section IX.
- All strainers are hydrostatically tested to 1 ½ times design pressure.
- 3" through 24" sizes

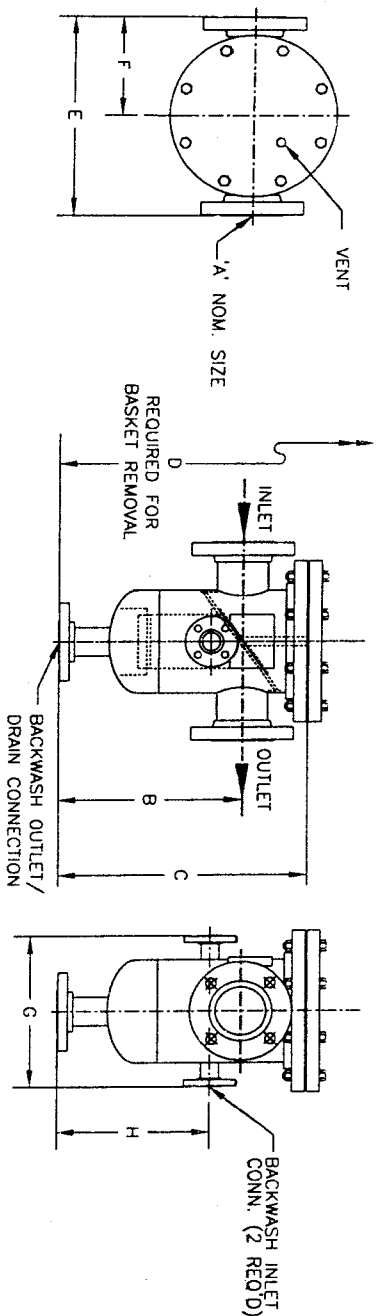
Standard Design Features:

- In line connections
- Compact, light weight fabricated vessels
- Angle basket design with a low pressure drop
- Large capacity basket
- Heavy duty basket design for a long life

Options Available:

- Basket materials of brass, monel, and others
- Mesh lined baskets – 20 x 20 to 400 x 400 mesh
- Numerous materials of construction such as stainless steel, copper nickel, monel, aluminum bronze, and others for corrosive environment
- ASME Section VIII, Code Stamp supplied with complete pressure vessel material traceability
- Vessel design for high pressure and temperature
- Inlet/outlet connections at right angles or offset configuration reduces piping cost.
- Pressure gauge taps – convenient indication of dirty baskets
- Cover lift assembly (davit) facilitates basket removal.
- Special internal and external coatings
- Legs, foot ring, or base available upon request.





MODEL NO.	A NOMINAL	B	C	D	E	F	G	H	BACKWASH OUTLET CONNECTIONS	BACKWASH INLET
030-224	3"	11-3/4"	17"	30"	16.6"	8.3"	11"	9-3/4"	1 1/2" NPT 40 mm	1" NPT 25 mm
040-224	4"	11-3/4"	17"	30"	16.6"	8.3"	11"	9-3/4"	1 1/2" NPT 40 mm	1" NPT 25 mm
060-224	6"	14"	20-1/4"	35"	21"	10.5"	14"	11"	2" NPT 50 mm	1 1/2" NPT 40 mm
080-224	8"	17"	24-1/2"	43"	24"	12"	16"	13"	2" NPT 50 mm	1 1/2" NPT 40 mm
100-224	10"	23-1/2"	32-1/2"	54"	28"	14"	19-1/2"	18-1/2"	3"-150# RF 50 mm	2" NPT 50 mm
120-224	12"	26-1/2"	36-3/4"	63"	30"	15"	21-1/2"	20-1/2"	3"-150# RF 80 mm	2" NPT 50 mm
140-224	14"	28"	40"	68"	32"	16"	23-1/2"	21-3/4"	3"-150# RF 80 mm	2" NPT 50 mm
160-224	16"	29"	41-1/4"	71"	34"	17"	30"	22-1/2"	4"-150# RF 80 mm	2-1/2"-150# RF 65 mm
180-224	18"	32"	45-1/2"	80"	36"	18"	32"	24-1/2"	4"-150# RF 100 mm	2-1/2"-150# RF 65 mm
200-224	20"	36"	51"	90"	42"	21"	42"	27"	6"-150# RF 100 mm	3"-150# RF 80 mm
240-224	24"	42-1/2"	57-1/2"	106"	50"	25"	48"	32"	6"-150# RF 150 mm	3"-150# RF 80 mm

Dimensions subject to change without notice, apply for certified drawings.
 Other sizes are available, please consult the factory or your local sales representative.