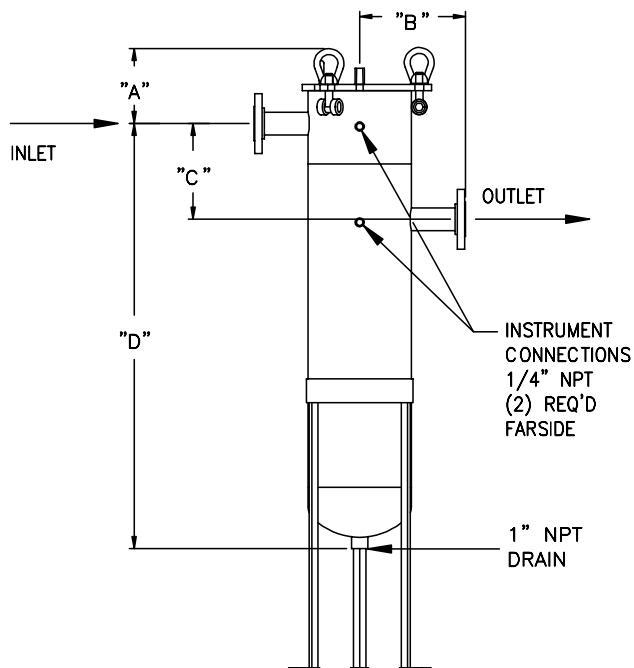


MODEL 602S (8-30) BASKET STRAINER

The Model 602S is a simplex strainer. It is a pressure vessel installed in a pipeline to remove unwanted solids from fluids. The Model 602S is used in applications where flow can be interrupted for basket cleaning (duplex arrangements are available upon request).

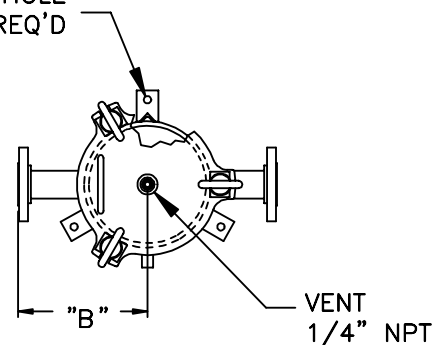
The Model 602S is designed with a **½ cu. ft. debris holding capacity** that allows for a longer run time. Along with a large holding capacity, it can also be used for very fine filtration by simply inserting a filter bag inside the basket. The incorporation of the swing bolt closure eliminates the use of any tools and also eliminates the need for nuts and bolts as in other designs in the market place.



STANDARD FEATURES:

- Offset Connections
- Swing Bolt Closure
- Standard Housing Materials are carbon steel, 304 stainless steel, or 316 stainless steel
- Inlet/Outlet Connections are ANSI Flanges
- Vent and Drain Connections are NPT
- Two ¼" NPT Instrument Connections
- Viton Seals
- Straining Basket: 3/32" perforations, 304 stainless steel
- Design Working Pressure: 150 psig
- Design Working Temperature: 250 F
- Designed, manufactured, and tested generally in accordance with ASME Section VIII, Division 1 with welders qualified to Section IX

1/2" DIA HOLE
3 REQ'D



| Size | A | B | C | D | WT APPROX |
|------|------|------|------|-------|------------------|
| 1 ½" | 7.5" | 7.5" | 6.0" | 35.5" | 105 lbs 48 kg |
| 2" | 7.5" | 7.5" | 6.0" | 35.5" | 110 lbs 50 kg |
| 2 ½" | 7.5" | 7.5" | 6.6" | 35.5" | 115 lbs 52 kg |
| 3" | 7.5" | 7.5" | 8" | 35.5" | 120 lbs 54 kg |
| 4" | 7.5" | 8.6" | 8.4" | 35.5" | 135 lbs 61 kg |
| 6" | 9.0" | 8.6" | 9.0" | 37" | 150 lbs 68 kg |

Notes: Dimensions subject to change without notice. Apply for certified drawings.

OPTIONS:

- NPT connections for inlet/outlet
- ANSI flanges for vent and drain connections
- Baskets are available in other materials, perforations, and meshes
- Other design pressures and temperatures are available upon request
- U-Stamp