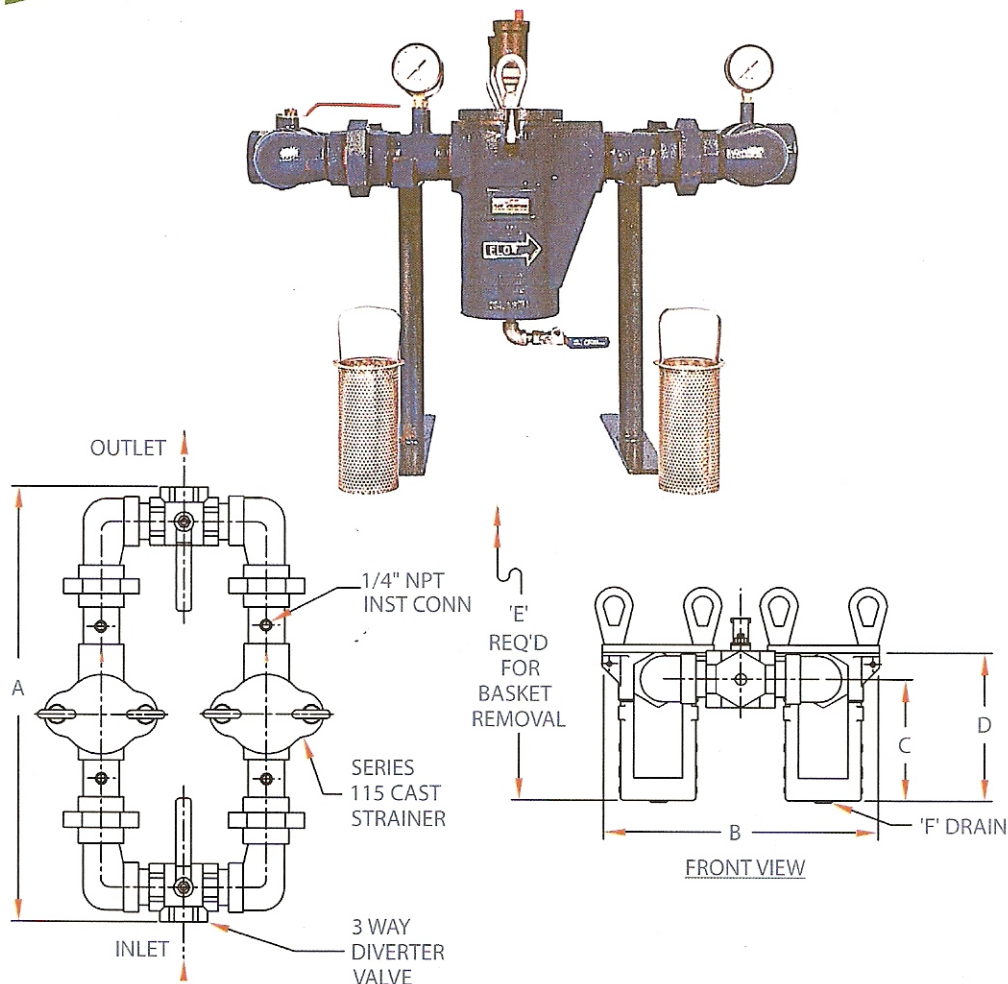




AN EMPLOYEE-OWNED COMPANY A DIVISION OF TM INDUSTRIAL SUPPLY, INC.
 1432 Walnut Street * Erie, PA 16502 USA * TEL: 814.453.5014 * FAX: 814.452.6573
 Website: <http://www.fluideng.com> * E-mail: sales@fluideng.com

SERIES 531 CAST DUPLEX STRAINER



SIZE	A	B	C	D	E	F	WEIGHT ¹
3/4"	22-1/2"	11-5/8"	5"	8-3/4"	12"	1/4" NPT	45 lbs.
20 mm	571.5 mm	295.3 mm	127.0 mm	222.3 mm	304.8 mm	1/4" NPT	20.4 kg.
1"	21-1/2"	12"	5"	8-3/4"	12"	1/4" NPT	55 lbs.
25 mm	546.1 mm	304.8 mm	127.0 mm	222.3 mm	304.8 mm	1/4" NPT	24.9 kg.
1-1/4"	24-3/4"	15-3/4"	8"	12"	18-1/2"	1/4" NPT	85 lbs.
32 mm	628.7 mm	400.1 mm	203.2 mm	304.8 mm	469.9 mm	1/4" NPT	38.5 kg.
1-1/2"	26-3/4"	16-1/2"	8"	12"	18-1/2"	1/4" NPT	95 lbs.
40 mm	679.5 mm	419.1 mm	203.2 mm	304.8 mm	469.9 mm	1/4" NPT	43.1 kg.
2"	29-3/4"	18-1/4"	8"	12"	18-1/2"	1/4" NPT	110 lbs.
50 mm	755.7 mm	463.6 mm	203.2 mm	304.8 mm	469.9 mm	1/4" NPT	49.9 kg.

Note: (1) Weights are approximate. Dimensions subject to change without notice, apply for certified drawings. Please consult the FE Sales Department or your local sales representative.

"Engineered Products for Demanding Applications, Performance, and Service"

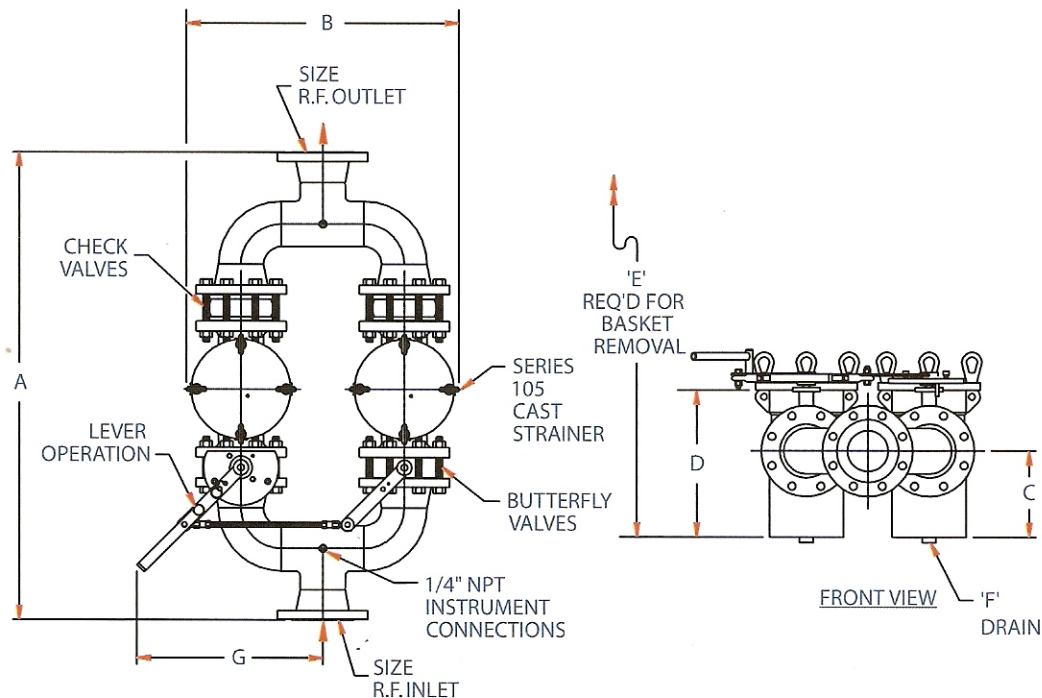
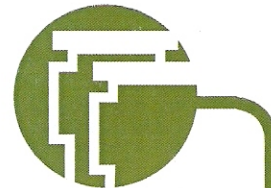
FLUID ENGINEERING

AN EMPLOYEE-OWNED COMPANY A DIVISION OF TM INDUSTRIAL SUPPLY, INC.

1432 Walnut Street * Erie, PA 16502 USA * TEL: 814.453.5014 * FAX: 814.452.6573

Website: <http://www.fluideng.com> * E-mail: sales@fluideng.com

SERIES 530 CAST DUPLEX STRAINER



SIZE ¹	A	B	C	D	E	F	G	WEIGHT ²
2"	36-1/2"	19"	8"	12"	18-3/4"	1/4" NPT	17-1/2"	190 lbs.
50 mm	927.1 mm	482.6 mm	203.2 mm	304.8 mm	476.3 mm	Bottom	444.5 mm	86.1 kg.
2-1/2"	42-1/2"	24"	8-1/2"	16-1/2"	27"	1/2" NPT	19"	310 lbs.
65 mm	1079.5 mm	609.6 mm	215.9 mm	419.1 mm	685.8 mm	Bottom	482.6 mm	140.5 kg.
3"	44-1/2"	26-1/2"	8-1/2"	16-1/2"	27"	1/2" NPT	18-1/2"	360 lbs.
80 mm	1130.3 mm	673.1 mm	215.9 mm	419.1 mm	685.8 mm	Bottom	469.9 mm	163.2 kg.
4"	47"	27-1/2"	8-1/2"	16-1/2"	27"	1/2" NPT	20-1/4"	450 lbs.
100 mm	1193.8 mm	698.5 mm	215.9 mm	419.1 mm	685.8 mm	Bottom	514.4 mm	203.9 kg.
5"	55"	34-1/2"	9-3/8"	18-1/4"	30"	1/2" NPT	22"	615 lbs.
125 mm	1397.0 mm	876.3 mm	238.1 mm	463.6 mm	762.0 mm	Side	558.8 mm	278.7 kg.
6"	60-1/2"	38"	10-1/4"	19-1/2"	32"	1/2" NPT	23-1/2"	795 lbs.
150 mm	1536.7 mm	965.2 mm	260.4 mm	495.3 mm	812.8 mm	Side	596.9 mm	360.3 kg.
8"	75"	47-1/2"	13-1/4"	24"	41"	1/2" NPT	27"	1290 lbs.
200 mm	1905.0 mm	1206.5 mm	336.6 mm	609.6 mm	1041.4 mm	Side	685.8 mm	584.6 kg.
10"	86-1/2"	57-3/4"	17"	29"	50"	1/2" NPT	30-1/2"	2090 lbs.
250 mm	2197.1 mm	1466.9 mm	431.8 mm	736.6 mm	1270.0 mm	Side	774.7 mm	947.2 kg.
12"	90-1/2"	68-1/4"	19-3/4"	33"	58"	1/2" NPT	34"	3250 lbs.
300 mm	2298.7 mm	1733.6 mm	501.7 mm	838.2 mm	1473.2 mm	Side	863.6 mm	1472.9 kg.

Note: (1) Larger models use handwheel in place of lever arm. (2) Weights are approximate. Dimensions subject to change without notice, apply for certified drawings. Please consult the FE Sales Department or your local sales representative.

"Engineered Products for Demanding Applications, Performance, and Service"