

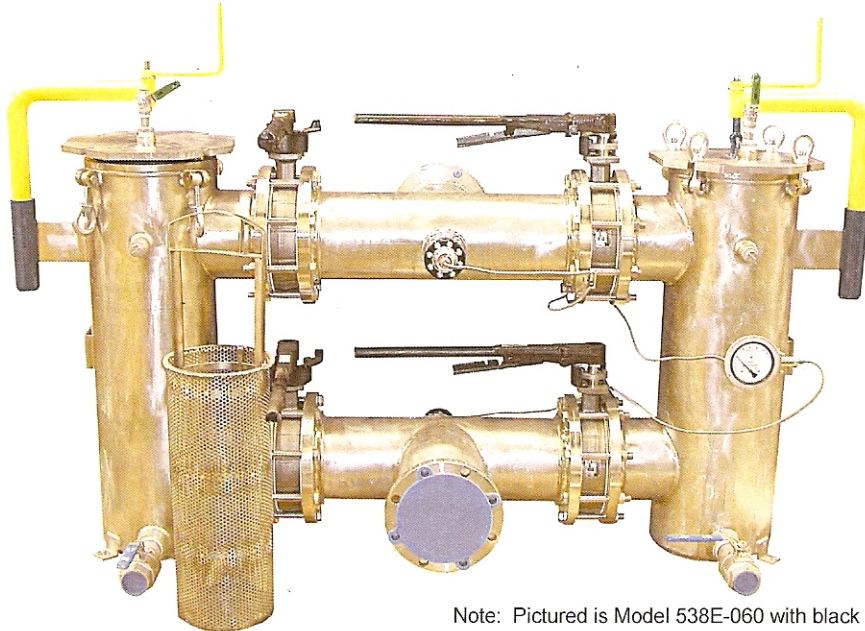
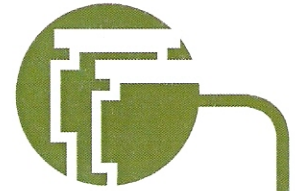
FLUID ENGINEERING

AN EMPLOYEE-OWNED COMPANY A DIVISION OF TM INDUSTRIAL SUPPLY, INC.

1432 Walnut Street * Erie, PA 16502 USA * TEL: 814.453.5014 * FAX: 814.452.6573

Website: <http://www.fluideng.com> * E-mail: sales@fluideng.com

Model 538/538E High Performance Slurry Duplex Strainer



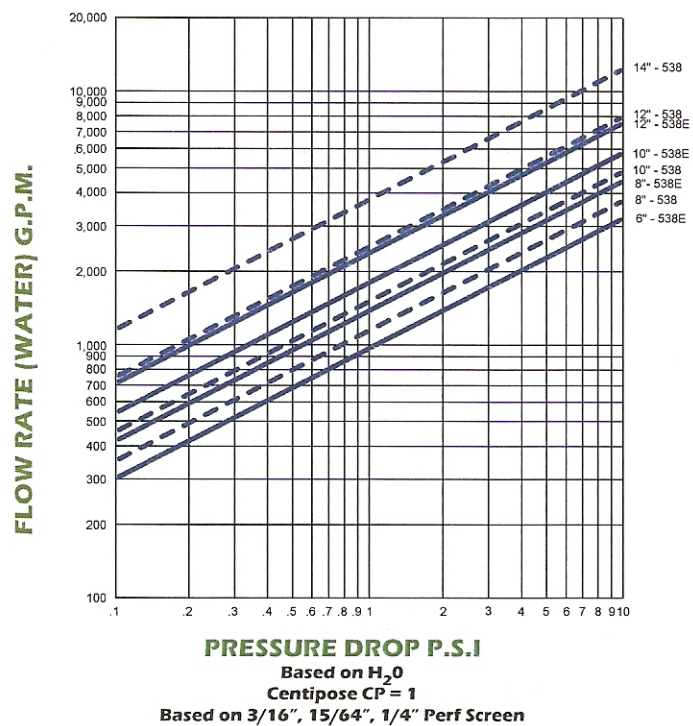
Note: Pictured is Model 538E-060 with black valve lever arms. All larger sizes utilize a hand wheel.

STANDARDS

Material:
Fabricated Carbon Steel or 304/304L
Stainless Steel
Davit Arm & Sleeve:
Carbon Steel Painted Yellow
Design:
150 PSIG @ 210° F
Straining Basket:
Heavy Duty 15/64" Perforated 316/316L SS

OPTIONS

Material:
Other Materials Available Upon Request
Drain Valves:
1" Threaded 316 SS Ball & Stem, Full
Port, Teflon Seats, Lever
Vent Valves:
1" NPT 316 SS
D.P. Assembly:
Diaphragm & Armored Capillary Tube
Backfilled with 25S Silicone Filled
Straining Basket:
Other perforated sizes and materials
available upon request



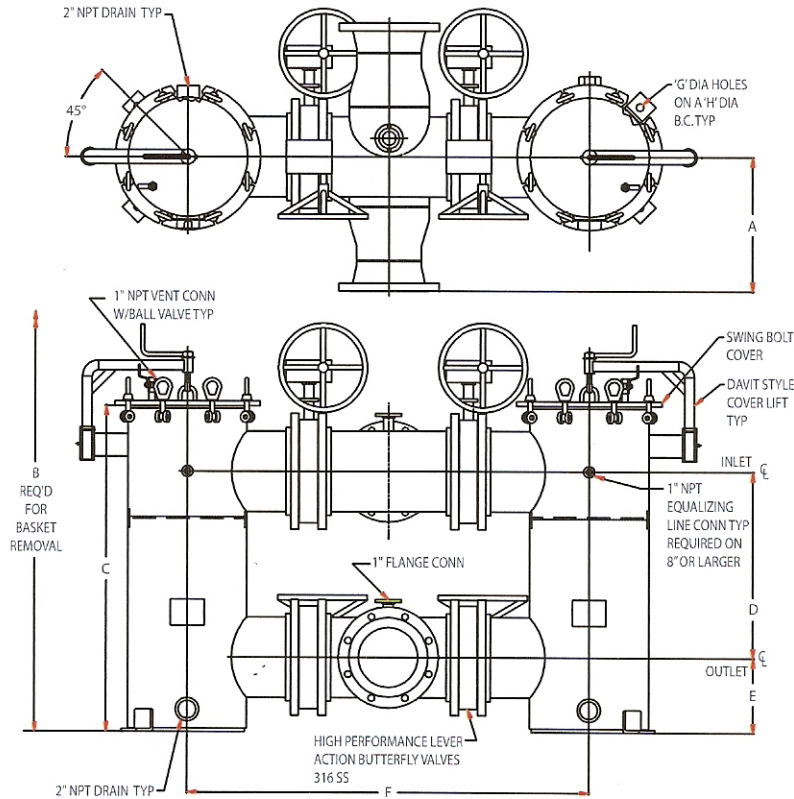
"Engineered Products for Demanding Applications, Performance, and Service"

FLUID ENGINEERING

AN EMPLOYEE-OWNED COMPANY A DIVISION OF TM INDUSTRIAL SUPPLY, INC.
 1432 Walnut Street * Erie, PA 16502 USA * TEL: 814.453.5014 * FAX: 814.452.6573
 Website: <http://www.fluideng.com> * E-mail: sales@fluideng.com



Model 538/538E High Performance Slurry Duplex Strainer



MODEL NO.	INLET	OUTLET	A	B	C	D	E	F	G	H
538E-060 ¹	6"-150# 152 mm	6"-150# 152 mm	16" 406 mm	77" 1956 mm	39 1/2" 1003 mm	22 3/8" 568 mm	9" 229 mm	44 1/2" 1130 mm	5/8" 16 mm	14 3/4" 375 mm
538-080 ¹	8"-150# 203 mm	8"-150# 203 mm	16" 406 mm	77" 1956 mm	39 1/2" 1003 mm	22 3/8" 568 mm	9" 229 mm	44 1/2" 1130 mm	5/8" 16 mm	14 3/4" 375 mm
538E-080	8"-150# 203 mm	8"-150# 203 mm	18" 457 mm	84" 2134 mm	43 5/8" 1108 mm	24 7/8" 733 mm	10" 254 mm	44 1/2" 1130 mm	1" 25 mm	19" 483 mm
538-100	10"-150# 254 mm	10"-150# 254 mm	18" 457 mm	84" 2134 mm	43 5/8" 1108 mm	24 7/8" 733 mm	10" 254 mm	44 1/2" 1130 mm	1" 25 mm	19" 483 mm
538E-100	10"-150# 254 mm	10"-150# 254 mm	20" 508 mm	95" 2413 mm	50 1/4" 1276 mm	28" 711 mm	12" 305 mm	60 1/2" 1537 mm	1" 25 mm	21" 533 mm
538-120	12"-150# 305 mm	12"-150# 305 mm	20" 508 mm	95" 2413 mm	50 1/4" 1276 mm	28" 711 mm	12" 305 mm	60 1/2" 1537 mm	1" 25 mm	21" 533 mm
538E-120	12"-150# 305 mm	12"-150# 305 mm	26" 660 mm	113" 2870 mm	58 3/4" 1492 mm	31 1/4" 794 mm	14" 356 mm	65 1/2" 1664 mm	1" 25 mm	23" 584 mm
538-140	14"-150# 356 mm	14"-150# 356 mm	26" 660 mm	113" 2870 mm	58 3/4" 1492 mm	31 1/4" 794 mm	14" 356 mm	65 1/2" 1664 mm	1" 25 mm	23" 584 mm

Note: (1) 538E-060 & 538-080 utilize lever arm instead of shown hand wheel. Dimensions subject to change without notice, apply for certified drawings. Custom designs are available, please consult the FE Sales Department or your local sales representative.

"Engineered Products for Demanding Applications, Performance, and Service"