



1432 Walnut Street * Erie, PA 16502 USA * TEL: 814.453.5014 * FAX: 814.452.6573
 Website: <http://www.fluideng.com> * E-mail: sales@fluideng.com

Series 600 "S" Basket Strainers

The Series 600 "S" are simplex strainers. They are pressure vessels installed in a pipeline to remove unwanted solids from fluids. The Series 600 "S" are used in applications where flow can be interrupted for basket cleaning (duplex arrangements are available upon request).

The Series 600 "S" are designed with **.4 to .5 cu. ft. debris holding capacity** that allows for a longer run time. Along with a large holding capacity, they can also be used for very fine filtration by including a mesh liner. The incorporation of the swing bolt closure eliminates the use of any tools and also eliminates the need for nuts and bolts as in other designs in the market place.

| Series Designations | |
|---------------------|--|
| 602S | 8" - 30, Offset Nozzles, Outlet Near Top |
| 603S | 6" - 30, Offset Nozzles, Outlet Near Top |
| 604S | 8" - 30, 2 pc/4 Leg Assembly, Outlet Near Middle |
| 605S | 8" - 30, 2 pc/4 Leg Assembly, Outlet Near Bottom |

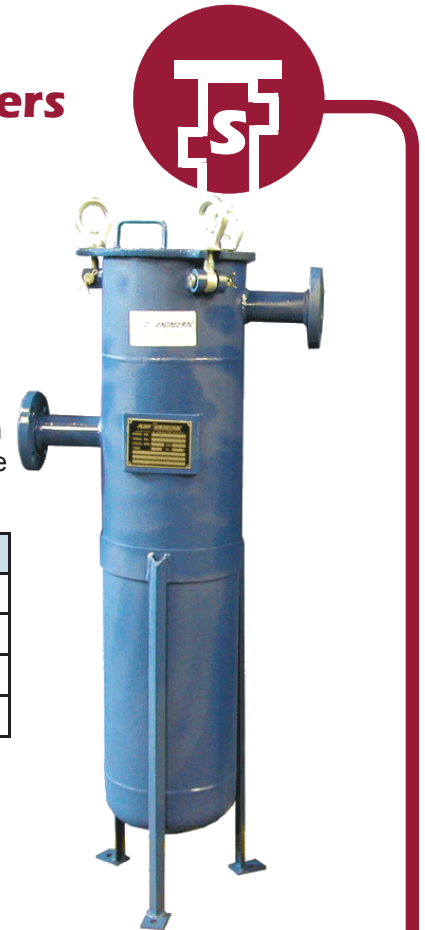


STANDARD FEATURES:

- Offset Connections
- Swing Bolt Closure
- Standard Housing Materials are carbon steel, 304 stainless steel, or 316 stainless steel
- Inlet/Outlet Connections are ANSI Flanges or NPT
- Vent and Drain Connections are NPT
- Two 1/4" NPT Instrument Connections
- Viton Seals
- Straining Basket: 3/32", 3/16", & 1/8" perforations, 304 or 316 stainless steel (Other perforations available upon request)
- Design Working Pressure: 150 psig
- Design Working Temperature: 250°F
- Designed, manufactured, and tested generally in accordance with ASME Section VIII, Division 1 with welders qualified to Section IX

OPTIONS:

- ANSI flanges for vent and drain connections
- Baskets are available in other materials, perforations, and meshes
- Other design pressures and temperatures are available upon request
- U-Stamp



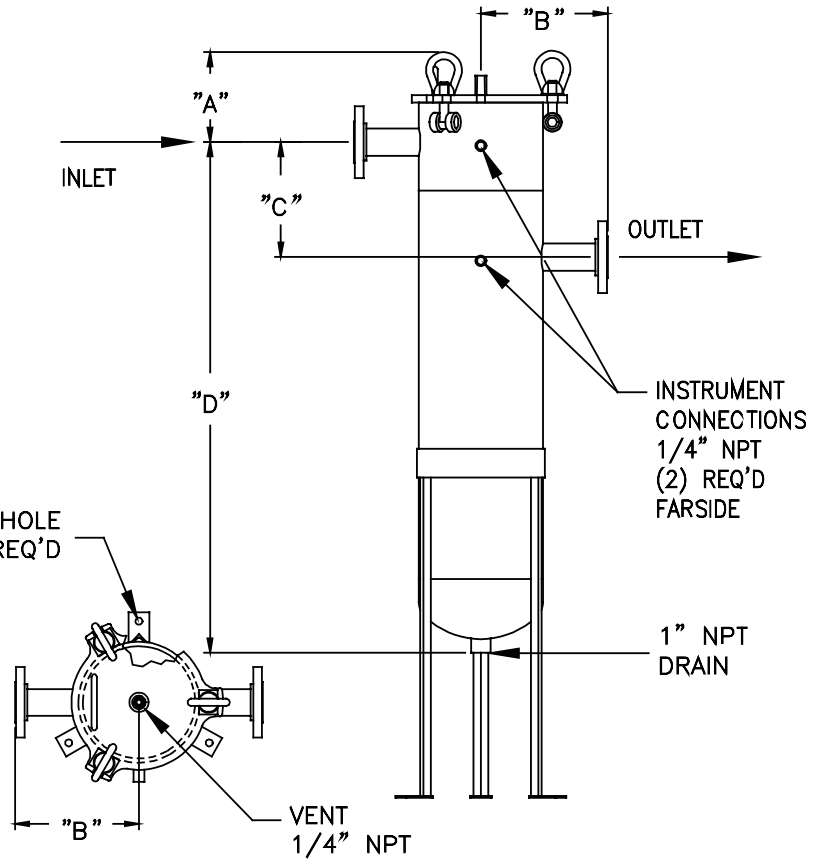
"Engineered Products for Demanding Applications, Performance, and Service"



Series 600 "S" Basket Strainers



602S with Insulation Retainer



| Series 602S (8-30) | | | | | |
|--------------------|--------------------|--------------------|--------------------|---------------------|------------------|
| Size | A | B | C | D | WT APPROX |
| 1 1/2" 25.4 mm | 7 1/2" 190.5 mm | 7 1/2" 190.5 mm | 6" 152.4 mm | 35 1/2" 901.7 mm | 105 lbs 48 kg |
| 2" 50.8 mm | 7 1/2" 190.5 mm | 7 1/2" 190.5 mm | 6" 152.4 mm | 35 1/2" 901.7 mm | 110 lbs 50 kg |
| 2 1/2" 63.5 mm | 7 1/2" 190.5 mm | 7 1/2" 190.5 mm | 6 5/8" 167.6 mm | 35 1/2" 901.7 mm | 115 lbs 52 kg |
| 3" 72.6 mm | 7 1/2" 190.5 mm | 7 1/2" 190.5 mm | 8" 203.2 mm | 35 1/2" 901.7 mm | 120 lbs 54 kg |
| 4" 101.6 mm | 7 1/2" 190.5 mm | 8 5/8" 218.4 mm | 8 3/8" 213.4 mm | 35 1/2" 901.7 mm | 135 lbs 61 kg |
| 6" 152.4 mm | 9.0" 228.6 mm | 8 5/8" 218.4 mm | 9" 228.6 mm | 37" 939.8 mm | 150 lbs 68 kg |

| Series 603S (6-30) | | | | | |
|--------------------|--------------------|----------------|--------------------|---------------------|-----------------|
| Size | A | B | C | D | WT APPROX |
| 1" 25.4 mm | 6 5/16" 160 mm | 6" 152.4 mm | 4 3/8" 109.2 mm | 34 1/2" 876.3 mm | 84 lbs 38 kg |
| 1 1/4" 31.8 mm | 6 5/16" 160 mm | 6" 152.4 mm | 4 3/4" 119.4 mm | 34 1/2" 876.3 mm | 84 lbs 38 kg |
| 1 1/2" 38.1 mm | 6 5/16" 160 mm | 6" 152.4 mm | 4 3/4" 119.4 mm | 34 1/2" 876.3 mm | 84 lbs 38 kg |
| 2" 50.8 mm | 7 1/8" 180.3 mm | 6" 152.4 mm | 6 5/8" 167.6 mm | 34 1/2" 876.3 mm | 89 lbs 40 kg |
| 3" 76.2 mm | 7 1/8" 180.3 mm | 6" 152.4 mm | 6 5/8" 167.6 mm | 34 1/2" 876.3 mm | 99 lbs 45 kg |

Note: Dimensions subject to change without notice. Apply for certified drawings.